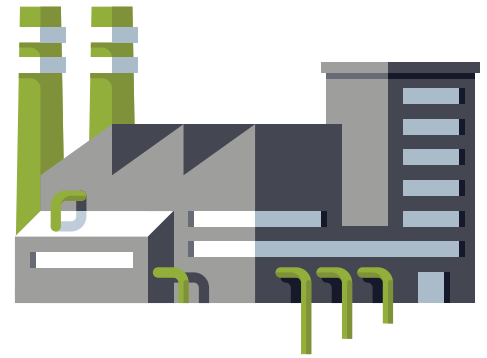




## V2 Technology executes multi-facility move – On Time and On Budget!

### THE CHALLENGE

A growing & forward-thinking Northeast Ohio tool and die company was in a major bind. They had a long-term strategic plan to consolidate their 5-building operation in Medina County, Ohio into a state-of-the-art facility in Valley City. While in their planning phase, Automation Tool & Die (ATD) discovered that their current IT provider was unresponsive in bringing any infrastructure & network plan to the table to meet their timeline. ATD needed a company that had strategic planning capabilities and resources to meet the needs of the project.



### THE SOLUTION

The V2 Technology team responded to the need. With a thorough & efficient planning process, the team was able to understand the needs and provide a complete architectural plan to meet the growing needs of Automation Tool & Die. V2's project management approach provided the critical structure and communication to ensure alignment with the company strategic plan and allow for timely execution. This included:

#### • System Architecture

- Design systems to be scalable, fault-tolerant, high performing and secure.

#### • Equipment Acquisition

- Acquired all needed equipment to support the 50+ person operation.
- Prioritized longer lead time items to ensure availability.
- Worked with single vendor where possible to leverage promotions and financing options, resulting in a significant savings.

#### • Network Design

- Deployed high-availability clustered servers automatically failing over in the event of hardware failure.
- Assisted with the design of a high-speed fiber loop providing connectivity throughout the facility.



## THE SOLUTION *(continued)*

### • Testing Plans

- Extensive wireless implementation and testing was ultimately able to reduce the purchase of Wireless Access Points (WAP) from over 30 units to 4.

The V2 team partnered with Automation Tool & Die throughout the entire process – providing additional training and mentorship along the way. In addition, the team provided continuous support throughout all phases to ensure a seamless relocation.



## THE RESULT

- Full system functionality at a state-of-the-art facility to allow ATD to grow into the future.
- A move completed on-time with all the required technical specifications met.

“In addition to designing and building our new 100,000+ square foot facility, we needed expertise to design and build infrastructure and the new ATD Network. Our vendor at that time was stringing us along, saying and doing things that diminished confidence and caused delays. At some point, we remembered a colleague referral and subsequent meeting with Pat (Golembiewski). We reached out for help and explained the need for confidence and solutions that very quickly ensured all systems would not only be functional and operational but also support the longevity of our company, continued technology improvements and growth.

Together, we quickly gained traction with the V2 Team and, without delay, built solid infrastructure and exceptional network that has facilitated significant improvements for our company. I will always appreciate and be grateful for the challenges we overcame together and work V2 did to facilitate success.”

– **Randy Bennett**  
Co-Owner, Automation Tool & Die